



TheCore server is a four SD/HD channels reliable and performance video server

TheCore server natively support such a wide range of codecs without requiring hardware changes

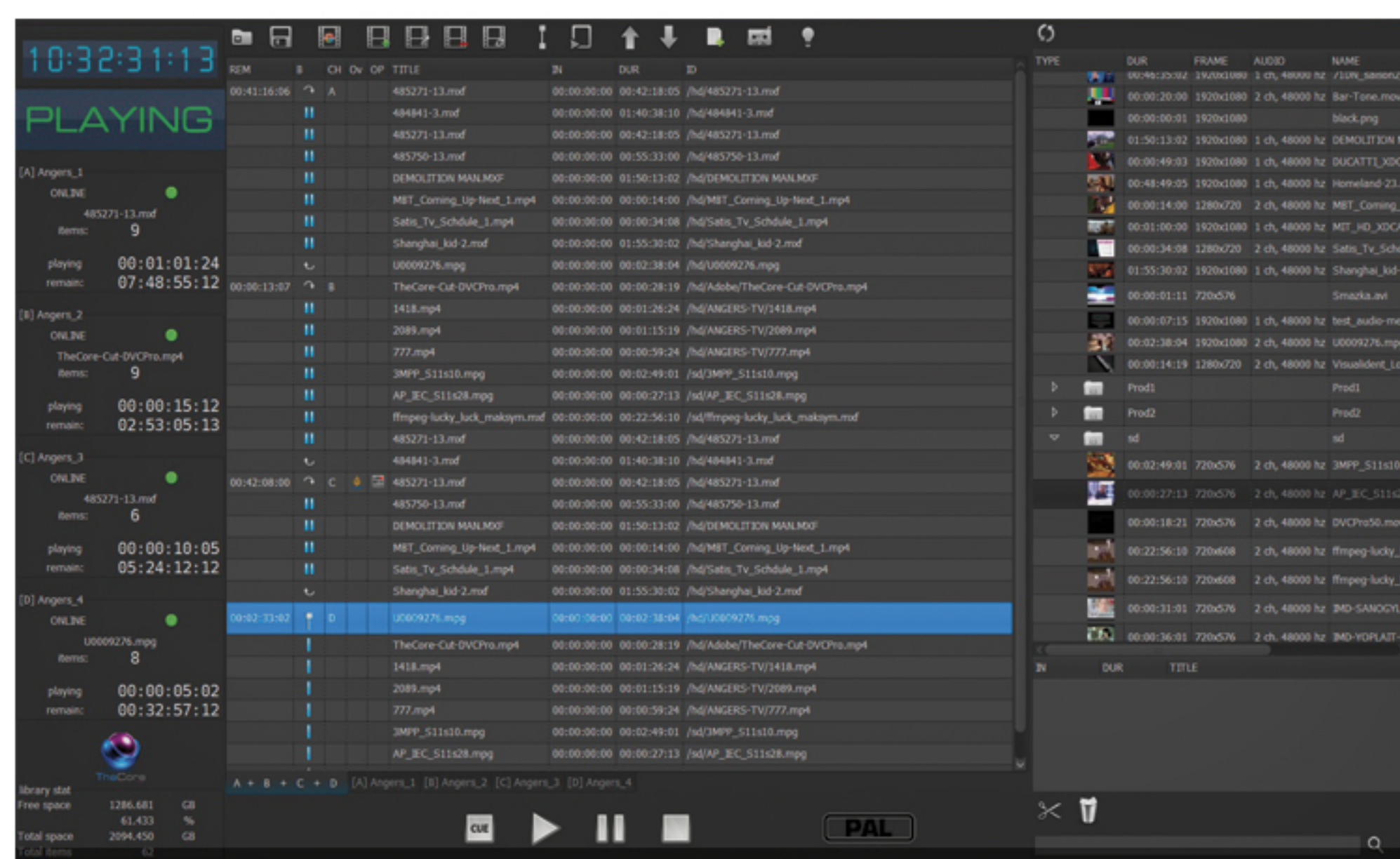
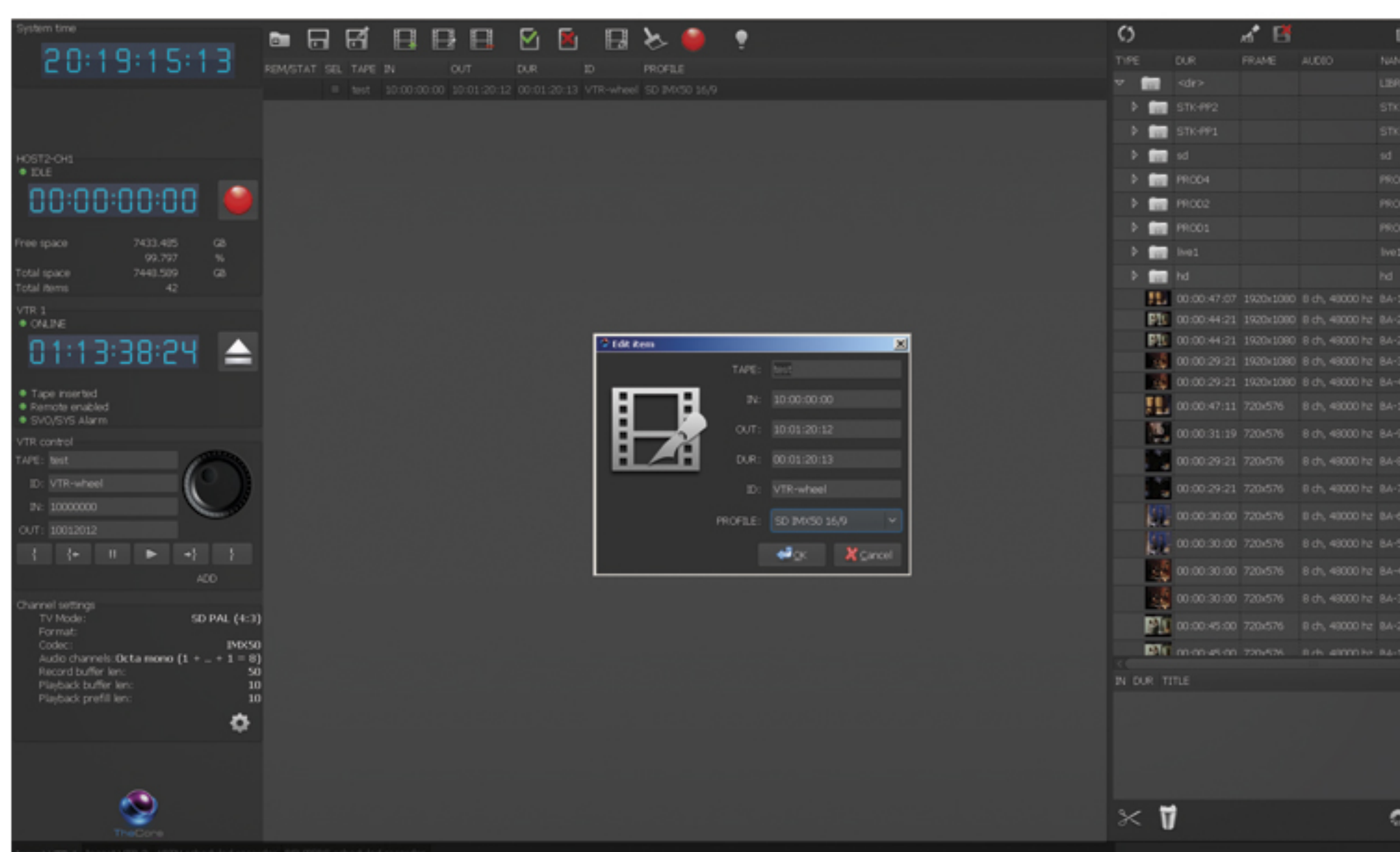
TheCore server combine Playout, Ingest and CG capabilities.



TheCoreIngestUI

TheCorePlayerUI

TheCoreBoxUI



Provide operators with the highest available level of flexibility and control.

Features

- VTR Ingest
- Schedule Ingest
- Crash record
- FTP et Transcoding
- Audio Mapping

Provide a complete control of the Playout.

Features

- Playout any video or audio content instantly
- Multi-playlist and Clip Trimming
- Preview with OSD on dedicated output channel.

All in one system that mix Playout and CG capabilities.

Features

- CG Templates
- Multi-level CG
- Multi-format playout
- Traffic playlist import
- API tools for third-party control



Technical Specifications

SDI Video Input :	4 x 10-bits SD/HD independently switchable.
SDI Video Output :	4 x 10 bits SD/HD independently switchable.
SDI Audio Input :	8 Channels per input, embedded in SD and HD.
SDI Audio Output :	8 Channels per input, embedded in SD and HD.
Sync Input :	Blackburst en formats SD, 720p50, 720p59.94, 1080i50 et 1080i59.94 or Tri-Sync in any HD format.
Video HD Formats :	DVCPROHD, DNxHD (120/145) MPEG-2 intra, XDCAM HD422 (50), Apple ProRes 422
Video SD Formats :	IMX D-10 (30/40/50), DVCPRO50.
SD Image Format :	625/25 PAL, 525/29.97 NTSC, 525/23.98 NTSC.
HD Image Format :	720p50, 720p59.94, 720p60, 1080PsF23.98, 1080p23.98, 1080PsF24, 1080p24, 1080PsF25, 1080p25, 1080PsF29.97, 1080p29.97, 1080PsF30, 1080p30, 1080i50, 1080i59.94 et 1080i60.
SDI Compliance :	SMPTE 259M, SMPTE 292M, SMPTE 296M.
Color Precision :	10-bits.
Color Space:	REC 601, REC 709.